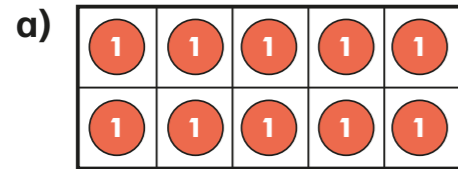


# Dividing 1 digit by 10

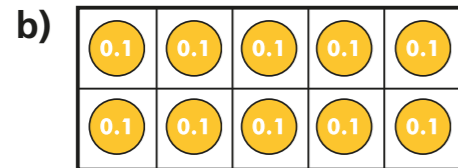
1 Look at the ten frames.



What number is represented?

Complete the division.

$$\square \div 10 = \square$$



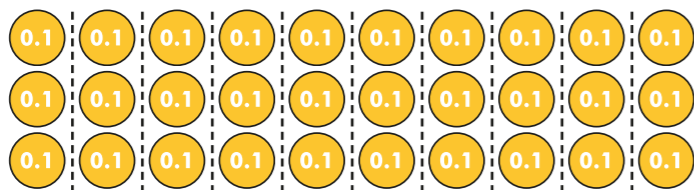
What number is represented?

Complete the division.

$$\square \div 10 = \square$$

c) What is the same? What is different?

2 a) What calculation is represented by the counters?

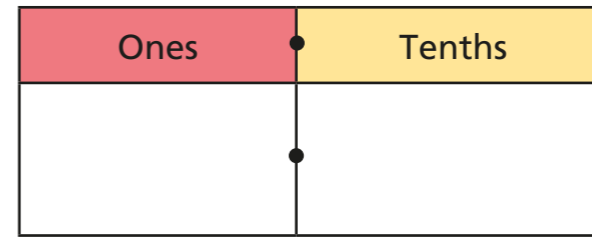


$$\square \div 10 = \square$$

b) Complete the number sentence.

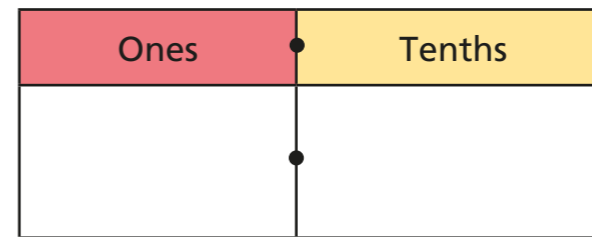
$$\square \text{ ones divided by ten} = \square \text{ tenths.}$$

3 a) Draw counters on the place value chart to show 7



b) Complete the division.  $7 \div 10 = \square$

c) Draw counters on the place value chart to show your answer.



d) What do you notice?

e) Complete the sentence.

$$\square \text{ ones divided by ten} = \square \text{ tenths.}$$

4 a) Use a place value chart to represent 9

b) Move the counters to the right to represent 0.9

c) Complete the division.

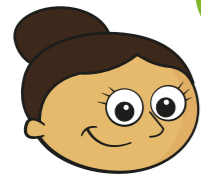
$$9 \div 10 = \square$$

d) What do you notice?

e) Complete the sentence.

$$\square \text{ ones divided by ten equals} \square \text{ tenths.}$$

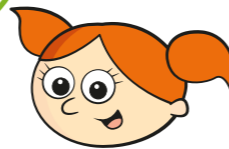
5



Dora

To divide by 10,  
you split the counters into  
10 equal parts.

To divide by 10,  
you put the counters on a place  
value chart and move them one  
column to the right.



Alex

Who is correct? Circle your answer.

Dora

Alex

neither

both

Compare answers with a partner.

6

Here is a one-digit number on a place value chart.

Ones	Tenths
6	

a) Complete the division.

$$6 \div 10 = \square$$

b) Write your answer on the place value chart.

O	Tth

c) In your own words, describe what happens to the digits in a number when you divide by 10

---



---

d) Use this method to work out the divisions.

$$7 \div 10 = \square$$

$$\square \div 10 = 0.8$$

7

Complete the divisions.

a)  $4 \div 10 = \square$

d)  $9 \div 10 = \square$

b)  $2 \div 10 = \square$

e)  $\square \div 10 = 0.3$

c)  $\square = 5 \div 10$

f)  $\square \div 10 = 0.1$

8

Complete the number sentences.

a)  $6 \div \square \div 10 = 3 \div 10$

b)  $24 \div 6 \div 10 = \square \div 10$

c)  $42 \div \square \div 10 = 21 \div 7 \div 10$

d) Write a problem like this for a partner to solve.

---

