

DIARY DATES

****ALL DATES ARE PROVISIONAL IN LIGHT OF THE COVID-19 PANDEMIC****

Saturday 15th January

DEADLINE FOR RECEPTION CLASS 2022 APPLICATIONS

Tuesday 18th January

Bikeability Y4

Wednesday 19th January

Bikeability Y5

Thursday 20th January

Flu Immunisations

7th-11th February

Children's Mental Health Week

Friday 18th February

School closes for half-term

Monday 28th February

School re-opens

FINAL REMINDER - JOINING OUR RECEPTION CLASS IN 2022 FINAL REMINDER

Applications to join the September 2022 Reception Class intake are closing on 15th January!



If you, or anyone you know is thinking about a place for a young superstar to join the brilliant St. Werburgh's family, **please greatly encourage them to make their application by**

15th January 2022.

To apply, visit:

<https://www.staffordshire.gov.uk/Education/Admissions-primary/Apply/Overview.aspx>

For further information about the Reception class of our lovely school and to book an after-school tour, please email: **office@st-werburghs.staffs.sch.uk**

Love to learn, love God, love one another.

30 MARVELLOUS YEARS

We are delighted to celebrate an amazing milestone as we start this term. Our wonderful

Mrs Price has now been a member of the St. Werburgh's team for an incredible **30 years!**

Some of you may have been taught, or supported by Mrs Price, or have older children who have worked with her here in our lovely school. Mrs Price is an important part of the PTA and has also previously been a school

governor. Three decades

supporting children and

families here in our

community is simply fabulous

and we know you will join us

in sending her your thanks,

congratulations and love.

Three cheers for Mrs Price

(one for each decade!)



EPIPHANY

The Feast of the Epiphany is

celebrated on 6th January.

Epiphany commemorates the visit

of the wise men, or magi, to

worship the baby Jesus. The magi

(Caspar, Melchior and Balthasar)

brought gifts of gold, frankincense and myrrh and

these were very meaningful. Gold is a precious

and expensive gift, and showed the importance

of Jesus. Frankincense is a sweet perfume which

was often burned in the temple to worship God

and was a sign that Jesus should be worshipped.

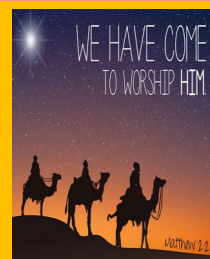
Myrrh was used to keep things fresh, and it was

used by the women to anoint Jesus' body when

He died. By bringing it as a gift to Jesus, the wise

men foretold His suffering and death.

...love God, love one another.



HAPPY BIRTHDAY TO YOOOUUUUUUUU!

We love to celebrate birthdays in school during our in-class, virtual 'Praise and Celebration' on a Friday. Please tune-in your best singing voice and join us in celebrating with the following children who have enjoyed a birthday from

Monday 3rd January to Friday 14th January.

Happy Birthday: Keaton, Sophia, Izzy D., Kenzie, Kyah, Molly, Bella-Rose,

Madison W., Tiffany, Oscar, and Sam.



A LITTLE HELPING HAND WITH MEALS

Many families may be finding things a little tougher at the moment. Whichever year group your child is in, if you think that you may now be eligible for income-based Free School Meals, we would urge you to check and, if so, submit an application. This **also** applies to children who currently receive a lunch due to being in Reception, or Years 1 and 2.

Those children in receipt of income-based Free School Meals are also eligible for additional benefits in school.

To find out more, or to apply, please visit:

www.staffordshire.gov.uk/Education/Educational-awards-benefits/FreeSchoolMeals



JOB VACANCY

Here in our lovely school, we are currently looking for a talented practitioner to join our team as a one-to-one Learning Support Assistant.

The post will commence this month (for two terms) and will be up to five mornings and three afternoons, with the possibility of joining us as a lunchtime supervisor too.

If you are a qualified learning support assistant/ teaching assistant and have experience working within an educational setting and wish to find out more, please contact the school office.

Love to learn, love God, love one another.

We now have a text messaging service for parents/carers of children aged 0-19 who live in Staffordshire.

Get advice from our Public Health nurses (Health Visitors and School Nurses).

TEXT: 07520 615722



We might inform someone if we were concerned about your safety but we would usually speak to you first. Your messages are stored and can be seen by other health care staff who follow the same confidentiality rules. We aim to reply to you within one working day and you should get an immediate message back to confirm we have received your text. There will only be some between 9am and 5pm. If you need help before you hear back from us contact your GP, mental health or dial 111. Our text number does not receive voice calls or MMS picture messages. We support messaging from UK mobile numbers only (which does not include messages sent from landlines, international mobile numbers and some 'number masking' mobile apps). To prevent the health visitor from sending messages to you, text STOP to our number. Messages are charged at your usual rates.



COVID-19 SYMPTOMS AND WHAT TO DO

Coronavirus/Covid-19

Below is a list of possible Covid-19/ coronavirus symptoms:

- High temperature (feel hot to touch on the chest or back);
- A new, continuous cough (coughing a lot for more than an hour, or 3 or more coughing episodes in 24 hours – if you usually have a cough, it may be worse than usual);
- A loss of, or change to your sense of smell or taste – you've noticed that you cannot smell or taste anything, or things smell or taste different to normal.

Most people with coronavirus have at least one of the symptoms. We have also been advised that the virus could present itself in children as an upset stomach, or headache.

If your child has any of the main symptoms of Covid-19/coronavirus: please isolate and arrange for a PCR test.

The person displaying symptoms should stay at home until the results have been returned. Should the result be positive, then it is essential that the infected individual self-isolates as per the government guidelines and does not attend school, or come onto the school site.

If you are worried about your symptoms, or are unsure what to do, please use the NHS 111 online coronavirus service (<https://111.nhs.uk/covid-19/>). If your child is under 5 years old, call 111 straight away.

The current governmental guidelines (as of 11 January 2022) state that children who are close contacts of a positive Covid-19 case no longer need to self-isolate and instead should complete a daily Lateral Flow test for seven days and if this is positive then they need to self-isolate immediately (there is no longer any requirement for a confirmatory PCR test). Of course, if your child is unwell, please keep them off school until they feel better - even if they have returned a negative result.

For further (regularly updated) information on the virus, visit:

<https://www.nhs.uk/conditions/coronavirus-covid-19/>

COVID-19 IN SCHOOL

Governmental guidelines for the management of Covid-19 have changed a few times over recent weeks. At the time of writing, if anyone is symptomatic, then they still need to arrange for a PCR test and remain in isolation (and off school) until the result is returned. If anyone has been a 'close contact' of a positive case, then there is no requirement to self-isolate and instead a daily Lateral Flow test is needed for at least a week. Should these continue as negative, then isolation is not required. However, should these return as positive, then isolation must commence immediately (no confirmatory PCR test is necessary). As things currently stand, if someone has returned a positive test result then they need to remain in isolation. On the sixth day, they may take a Lateral Flow test. If this is negative, then a second test should be taken the following day. If these are both negative then the isolation can end the next day. If the 'day 6' test is positive, then this process begins again from day 7, or 8, with the need for two consecutive days (at least 24 hours apart) of negative results in order to end isolation early. If the tests remain positive throughout days 6-9, then isolation ends following Day 10. Your NHS Covid-19 App will keep you up-to-date with the most recent guidelines. Please follow the advice regarding testing and isolation, so we can keep each other, and especially the more vulnerable members of our school and extended families, safe.

It is important that we work together to try to reduce the virus' impact on children's learning. As such, please ensure that your child accesses all remote or home learning opportunities during a period of isolation (unless unwell). Children have had a great deal of interruption to their learning over the past few years and we wish to continue to support their journey as young learners. If you need to borrow a laptop or tablet so your child can learn at home, please just let us know.

The above guidelines, may be subject to change in the event of a number of cases in school and subsequent advice from the Local Authority Outbreak Team.

****Please note that the periods of isolation change once again on Monday 17th January.****

Unfortunately, you are aware that we are currently affected by several positive cases in school. Of course, you will understand that periods of absence may also mean that some usual plans/ procedures in school may need to be changed.

Please stay safe, keep others safe, and be vigilant.

...love one another.



PARKING SAFELY

As we all want to keep everyone safe, please can we ask that those who drive to school park safely and responsibly, and avoid the zig zags which are there to protect children.

Please also respect our neighbours when parking your car. We also urge those in cars to only remain near to the school site for the necessary time to drop-off or collect your child as this will then free parking spaces for others. At a time when there is much to think about, let's work together to remove the risk caused by dangerous or inconsiderate parking.

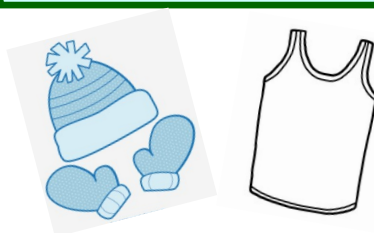
...love one another.

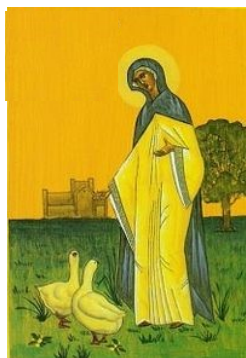
STAYING NUT FREE

To continue to keep everyone safe in school, may we remind all that **NO nuts, or nut-based snacks/lunch** should come into school with your child. All products which you buy in shops have a list of ingredients, and on these it will say if they contain nuts. If they do, please do not send them into school as **they cannot be eaten on site**. If you are unsure if something contains nuts, or nut-based products, please play it safe and leave this at home. This decision is made to keep **everyone** safe in school.

WRAP-UP WARM

Now that the chilly months are upon us once again, please can you ensure that all children bring to school a warm coat each day and a hat and gloves to keep nice and toasty. Can we also request that children also have joggers and a sweatshirt for any outdoor learning in PE. As we need to keep school well-ventilated, a vest is also a very good idea.





TIMINGS

Below is a reminder of the timings for each class. Please can we ensure that we follow these timings carefully from January. The start of the school day for each class is stated below.

Children need to arrive in school by these times.

	Car park gate			Front gate	
	Arrive	Collect		Arrive	Collect
Year 1	8.40am	3.20pm	Year 3	8.40am	3.15pm
Year 2	8.45am	3.25pm	Year 4	8.45am	3.20pm
Reception	8.50am	3.15pm	Years 5/6	8.50am	3.25pm

WELCOME, MRS EVANS

We are sure you join us in welcoming Mrs Evans to the school team as our new Reception class teacher. Mrs Evans is working with our youngest superstars following Miss Hickman's decision to leave the teaching profession. Mrs Evans was able to join us for one of the FS/KS1 Christmas performances, so many of you may have already seen her singing along with the children!

The children are helping Mrs Evans to settle in comfortably and please give her a wave should you see her too!

SPECIAL MENU

This term, we are delighted to have offered a few changes to the school meals, to offer a 'special menu'. The children have been able to join in with 'Veganuary' on 13th January and on **20th January**, we are offering a very delicious '**All Day Breakfast**' menu to bring smiles and a hearty lunch on these chilly days.

FROST, ICE AND SNOW ...WHICH WAY TO GO!



In the event of any icy/snowy conditions, please use only the cleared pathways for both entrances. To help maintain social distancing, please allow space for others to pass on the gritted area. If you also have a child at Kingsley Kingfishers and usually access school through the car park gate (Reception and Years 1 and 2), in the event of ice or snow, please use the front/main gate as a path will be cleared from here to the Kingfishers' entrance.

In the unusual (and rare!) event that we have to close due to health and safety issues caused by snow or ice, we will endeavour to contact you through text message and also aim to also put a message on the school website (www.tmpf.staffs.sch.uk).

Please remember NOT to walk across the school car park as this is not open to parents/carers and is also not gritted.

KEEPING YOUR CHILD SAFE ONLINE

Santa may have delivered technological devices to some lucky children, which allows them to access the internet. On our website, you will find further information of how you can keep your child safe online. Staying safe online is a big part of our Computing curriculum, and by visiting a few of the sites listed, and with a little bit of research of your own, you can find out more about the important age restrictions for social media (including WhatsApp and TikTok) and other tips about E Safety/ ways in which you can protect your child in the online world.

<http://www.tmpf.staffs.sch.uk/st-werburghs/news/>

THANK YOU

We finish the first newsletter of 2022 with a big 'thank you' to you, our wonderful parents, carers, step-parents, grandparents, aunts, uncles, siblings, cousins and friends for your support of school throughout 2021. The team join you in being full of excitement and hope for 2022, and are looking forward to continuing to work alongside you to support your child's educational adventure.

Love to learn, love God, love one another.