



Great [Wood] News

Autumn Term 4



School Contact Details



Telephone: 01538 702355 option 4
Email: office@greatwood.staffs.sch.uk

Arbor: School Messaging
Website: www.tmpf.staffs.sch.uk

Diary Dates

Friday 21st October	-	School Closes for Half term
Monday 31st October	-	School Re-Opens
Tuesday 2nd November	-	PTFA Meeting, 6pm - All Welcome
Thursday 10th November	-	FLU Vaccinations
Wednesday 16th November	-	Scooter Skills - Year 2-6
Friday 18th November	-	BBC Children In Need
Saturday 19th November	-	Christmas Extravaganza
	-	Cheadle Christmas Lights Switch On
Monday 21st November	-	Y5/6 Swimming Gala
Friday 25th November	-	Tean Christmas Lights Switch On
Monday 28th November	-	PTFA Christmas Disco, 6-7.30pm
Wednesday 30th November	-	PTFA Christmas Bingo - Doors Open 6pm, Eyes Down 6.30pm
Thursday 1st December	-	Year 4 and Year 5 Bikeability
Friday 2nd December	-	Year 4 and Year 5 Bikeability
Tuesday 6th December	-	Nativity Performance, 5.30pm
Thursday 8th December	-	Nativity Performance, 5.30pm
Friday 9th December	-	Elf Day
Monday 12th December	-	KS2 Christmas Trip - The New Vic Theatre, Alice In Wonderland
Tuesday 13th December	-	Victoria Hall Christmas Concert
Wednesday 14th December	-	Christmas Lunch
Thursday 15th December	-	Reception & KS1 Christmas Trip - Wonderland, Telford
Friday 16th December	-	Christmas Breakfast
	-	Christmas Jumper Day
	-	Christmas Carol Service
	-	School Closes For The Christmas Holiday
Wednesday 4th January	-	School Opens For Spring Term



A Harvest Thank You

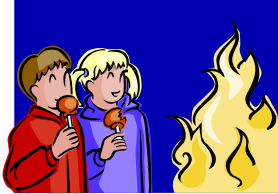
On Friday 14th October we celebrated Harvest, with an own clothes day and Harvest songs at the end of the school day. We would like to extend a huge thank you to our amazing Great Wood family, you have been extremely generous with your monetary donations and donations for the food bank. This kindness will make a massive difference to people who really need our help at the moment. Thank you.



Flu Vaccinations

All children have been offered a flu vaccine as part of the school's vaccination programme. The vaccine is designed to protect children against flu, which can be an unpleasant illness. By having the vaccination, children are also less likely to pass the virus on to friends and family.

Electronic consent forms have been issued and need completing by **9am Thursday 3rd November.**



Thursday 3rd November

Bonfire Lunch

Guy Fawkes Veggie Sausage or Pizza Pin Wheel
with Chips and BBQ Baked Beans
Bonfire Marble Cake

Bug Club

After half term Carrie will be returning to Great Wood with her amazing bugs! We will be running a KS2 bug club this next half term. There will be a charge of £30 for the term. Places can be booked via Arbor.



Great Wood Primary School

Vicarage Road, Upper Tean, Staffordshire, ST10 4LE. Tel: 01538 702355 option 4.
E-mail: office@greatwood.staffs.sch.uk



Looking for the right school?

Is your child due to start school in September 2023? If yes, come and see what Great Wood Primary School has to offer. We are a small village school, with a true family ethos, caring and dedicated staff, offering high-quality education.

All families are welcome to visit our amazing school. We will be holding some informal tours of our school, on the following dates:

- Tuesday 8th November 9.45am
- Thursday 10th November 3.45pm
- Tuesday 15th November 9.45am

If you would like to come and see what we have to offer, please contact us on 01538 702355 option 4 or email the school office. Please contact us if you would like to visit us at an alternative time.

The school tours are by appointment only. During the morning tour you will be able to see the children learning in their classroom.

We look forward to meeting you and showcasing all that Great Wood has to offer.

We look forward to meeting you.



CHECKLEY PARISH PUMPKIN & SCARECROW COMPETITION & TRAIL

CREATE A SCARECROW, CARVE A PUMPKIN OR DECORATE YOUR HOME



22ND TO 31ST OCTOBER

ENTRY IS FREE, WITH PRIZES FOR THE BEST ENTRIES

stephanie.akerman@checkley.staffslc.gov.uk

Stephanie - 07895168323

@checkleyparishcommunitytrails

Keeping warm!

As we start to say a reluctant goodbye to the summer and the cold & wet weather creeps in, we ask that all children bring a coat to school, to wear at playtime and lunchtime. Also, as it becomes appropriate, please can you ensure that your child/children have hats and gloves to keep them warm, when they are on the playground.

Children that do not have suitable outdoor clothing, will not, as the weather becomes colder, be allowed to have an outdoor playtime and will have to remain inside at break and lunch times.

Thank you for your help in keeping our Great Wood children warm and cosy.



Happy Holiday!

We break up for the Half Term on Friday 21st October. School opens again on **Monday 31st October** when we look forward to the second half of a busy Autumn Term!

We would like to take this opportunity to wish everyone a safe and happy holiday.

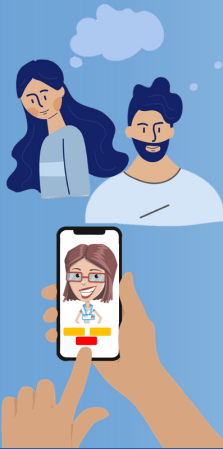


Families' Health and Wellbeing

School Nurse virtual drop in clinic

NHS
Midlands Partnership
NHS Foundation Trust
A Keele University Teaching Trust

Every
Thursday
from
3.30 - 4.30pm



The School Nurse is here to help your child feel healthy, happy and safe during their school years and to get the best from their education. If you have any concerns about their health and wellbeing please drop in to chat.

Join the link and talk to a School Nurse.

We provide a confidential and friendly service

mpft.live/schoolnurse



Extra Curricular Clubs

Book now for Autumn Term!

Dear Parents/Guardians

We would like to invite your child to participate in our ASM Sports extra-curricular club at **Great Wood Primary School**.

Our clubs are open to children of all abilities and provide a further chance to extend learning in an organised, fun and safe environment.

- ✓ Opportunity to practice new sports
- ✓ Improves concentration and behaviour
- ✓ Encourages a healthy and active lifestyle
- ✓ Develops confidence and self-belief

Alternative Sports Club

Year 1 - 6

£4.00
per club

Wednesday
15:30 - 16:30

From:
02/11/22
To:
14/12/22

Name:

Class:

Dates

Please tick

02/11/22

09/11/22

16/11/22

23/11/22

30/11/22

07/12/22

14/12/22

If you would like to book your child onto the sessions then please visit asmports.co.uk to secure your place. Simply register an account, select your school and choose your dates. Places are limited and will be secured on a 'first come, first served' process.

See you at the club!

Team ASM Sports



Enhanced DBS



Paediatric First Aid



Safeguarding Children



£5m Liability Insurance



Tel: 01782 366332

Visit: www.asmports.co.uk

Email: info@asmports.co.uk

Address: G22 Genesis Centre, Stoke-on-Trent, Staffordshire, ST6 4BF

Registration No: 07376198 VAT No: 159838063



This year we will once again be supporting the BBC Children In Need Appeal at Great Wood. We will be selling wristbands, pin badges, Pudsey/Blush Ears and Stationery, at the following prices:



NEW Pudsey Collectables
£1.00



NEW Silver or Gold Pin Badges
£1.00



Selection of wristbands
£1.00



Blush or Pudsey Ears
£2.50



NEW Pudsey Stationery
Pens £1
Rulers £2
Notepads £2



Our support for charitable causes is as a result of your generosity, however, we appreciate it may not always be easy to make contributions.

Applications for Reception September 2023

The application process for Reception Class 2022 opens on Tuesday 1st November.

If you, or anyone you know has a child who is due to start school in September, please be aware that the application process will open soon.

All applications must be done online at www.staffordshire.gov.uk/admissions and by following the links to 'Apply online'. Please be aware that having your child's name in the school book DOES NOT mean you automatically have a place and an online application has to be made.

If any parent requires help with the application process, please contact the school office, who will be happy to help.



Poppy Appeal

We will once again be supporting the Royal British Legion Poppy Appeal. This year we have a variety of goodies as well as the traditional poppies. These will be available to purchase in school now.

Wristbands	£1.00
Snap Bands	£1.50
Reflectors	50p
Zip Pull	50p

All monies raised will go to the Royal British Legion.
Thank you in advance for your support.



Headlice

We have, unfortunately, got the problem of headlice in school again. Please can we ask that you check your child's hair as a precaution and treat as necessary. Please be extra-vigilant in checking your child's hair each week, to help us to eliminate this persistent problem. Many thanks for your help.



Did you know your child's meal could be FREE?

School meals for children in Reception, Years 1 and 2 are FREE to all pupils, but did you know that children in Years 3 to 6 could also get their hot school meal or packed lunch for FREE?

If you are in receipt of selected Government benefits e.g. Universal Credit, your child may be entitled to free nutritious school meals saving you approx. £400* a year!

*This saving will depend on the cost of a meal at your school.

Check if you're eligible and start saving today!

Head to:
www.gov.co.uk/apply-free-school-meals
Or speak to your school office.

YOU COULD SAVE
£400



Healthy Lunches

We would like to remind parents that Great Wood is a healthy eating school. If your child brings a packed lunch to school, please can you ensure that it is as healthy as possible. "Eat better, feel better" Change4life.



Sickness

May we remind you that as advised by the Health Protection Agency, all children must be kept away from school for 48 hours, after their last episode of sickness, or diarrhoea.



Christmas Comes To Great Wood

On Saturday 19th November we will be holding our 1st Christmas Fair since 2019. The fair will be between 12.30pm and 2.30pm and we are hoping it will mark the start of the Christmas season for our Great Wood Family.

There will be lots of stalls from external sellers (there are still stalls available, should you want one) and lots of Great Wood stalls as is our tradition.

We would be very grateful for any donations, which you can give us, such as teddies (clean and in good condition), mince pies, small toys for the lucky dip stall, toys, bottles of wine, or tombola prizes. We will also be having an own clothes day for tombola prizes, in November (date to be confirmed).

We hope that you will be able to help us and also that you will join us on the day. The funds raised by Christmas fair, help to provide all those extras for our Great Wood children.

Please give any donations to Mrs Buckley, Mrs Fallon or Mrs Bromley in the school office.

Thank you in advance.

If you can help us for a short time on the day, please let us know.



**LEARN SOME NEW SKILLS....
MAKE SOME NEW FRIENDS...**



COME AND JOIN US AT CHEADLE TOWN F.C.

**BOYS AND GIRLS OF ALL
PRIMARY SCHOOL AGE WELCOME!**

**FROM RECEPTION TO YEAR 3: JUST TURN UP!
SATURDAY MORNING 9-10am AT CHEADLE COUNTY
PRIMARY PLAYING FIELD, ASK FOR MO**

**YEAR 4: SATURDAY MORNING 10.15 - 11.15am AT
CHEADLE COUNTY PRIMARY PLAYING FIELD - ASK FOR
PETE OR CONTACT HIM ON 07980 392121**

(No session Saturday 22nd October)

**YEAR 5/6: CONTACT MO FOR MORE INFORMATION ON
TRAINING TIMES 07918 663131**

