



# Great [Wood] News

## Spring Term 2



### School Contact Details



Telephone: 01538 702355 option 4  
Email: [office@greatwood.staffs.sch.uk](mailto:office@greatwood.staffs.sch.uk)

Arbor: School Messaging  
Website: [www.tmpf.staffs.sch.uk](http://www.tmpf.staffs.sch.uk)

### Diary Dates

|                         |   |   |
|-------------------------|---|---|
| Monday 30th January     | - | Y5/6 Basketball Tournament - Separate letter to those involved        |
| Friday 3rd February     | - | NSPCC Number Day  |
| Tuesday 7th February    | - | Safer Internet Day  |
| Thursday 9th February   | - | R/1 Muddy Morning   |
| Friday 10th February    | - | PTFA Race Night, 7pm -10pm  |
| Monday 13th February    | - | Y3/4 Swimming Gala  |
| Tuesday 14th February   | - | Valentines Lunch  |
| Wednesday 15th February | - | Year 6 Transition Day @ TCA <b>**date change**</b>                    |
|                         | - | Parents Evening   |
| Friday 17th February    | - | Pancake Lunch   |
|                         | - | Year 3/4 Violin Assembly, 2.30pm - All Welcome                        |
|                         | - | School Closes For Half Term   |
| Monday 27th February    | - | School Re-Opens   |
| Tuesday 28th February   | - | Reception & KS1 Visit to Cadbury World                                |
| Thursday 2nd March      | - | World Book Day  |
|                         | - | World Book Day Lunch  |
| Friday 3rd March        | - | KS2 Dance Festival @ St Werburghs - Separate letter to those involved |
| Tuesday 14th March      | - | Scholastic Book Fair  |
| Friday 17th March       | - | Comic Relief  |
| Wednesday 22nd March    | - | Year 3/4 Football @ Cheadle Primary School                            |
| Friday 24th March       | - | Non Uniform Day, Easter Chocolate Donations                           |
|                         | - | PTFA Easter Disco, 6-7.30pm   |
| Wednesday 29th March    | - | Year 5/6 Football   |
| Thursday 30th March     | - | PTFA Easter Bingo   |
| Friday 31st March       | - | School Closes For Easter Holidays                                     |
| Monday 17th April       | - | Inset Day - School Closed For Pupils                                  |
| Tuesday 18th April      | - | School Re-Opens   |
| Friday 28th April       | - | PTFA Family Quiz Night  |
| Monday 1st May          | - | Bank Holiday - School Closed  |
| Friday 5th May          | - | Coronation Picnic   |
| Monday 8th May          | - | Bank Holiday - Coronation of King Charles III - School Closed         |
| Wednesday 17th May      | - | Year 5 Transition @ TCA   |
| Saturday 20th May       | - | Spring Fair   |



# Number Day 2023

On Friday 3rd February 2023 we will be supporting the NSPCC Number Day.

We are inviting our Great Wood children to wear their own clothes for the day; with a number on, or something green. If it is your child's PE day please send them to school in trainers with their own clothes, suitable for PE.

During the day the children will take part in a number treasure hunt and a number of other fun maths activities.

A £1 donation towards the NSPCC would be very much appreciated.

Thank you to everyone who came to this week's PTFA meeting. The evening was a great success and we have lots of exciting events to look forward to!

Our next meeting is on Wednesday 15th March and will be held at The White Hart in Tean @ 6.30pm. Why not come and join us and see how you can help with our upcoming events.



## Gloves, Hats and Scarves



Please can we remind you that it is very cold on the playground at the moment (especially if it is windy), so please can you ensure that your child/children have suitable outdoor clothing. Gloves, hats and scarves are a huge help, in fighting off the cold.

## Mrs Rees Class Muddy Mornings

This term, children in Mrs Rees' class will be taking part in Muddy Mornings! These will be on:

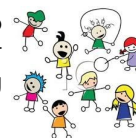
- Thursday 9th February

All children will need to come to school dressed in warm, outdoor clothes and wellies/winter boots on these days. Please ensure clothes are suitable for the cold weather. Children will also need a spare pair of shoes for indoors.



## Multiskills

Mrs Roberts would like to send a huge thank you, to all of you that helped to transport our year 2 children to The Cheadle Academy, for their multiskills visit, last Friday. It is your generous support that enables our Great Wood children to do these extra activities. The children had a great time, joining in with the sporting challenges and interacting with children from other local primary schools.



## School Ties



We are having an increasing number of children arriving in school without their tie. We would be grateful if you could ensure that your child wears their tie every day because, as you are aware, it is a compulsory part of our school uniform. Ties are available to purchase from Something Special, Cheadle.

## Stay in Contact

We would like to remind you that if you move house, change your email address, or get a new mobile phone number, you need to inform the school office as soon as possible. We need to be able to contact you in the event of an emergency, so it is vital that we have up to date contact details for all our Great Wood Families.

Please ensure that you let us know straight away, if any of your contact details change.



## Exciting News!



We have some exciting news to share with you all. Our fantastic Mrs Rees is expecting her second baby. Baby Rees is due to be born in June this year and Lottie will be a big sister. As you can see from the picture Lottie is very happy with this great news.

Our Great Wood family send huge congratulations to Mr and Mrs Rees and we look forward to meeting their new baby.



## Teddies

It might seem early, but we are on a mission!

We are now starting to collect teddies for the Spring Fair!

If you have any clean and not too tatty teddies, we would be very grateful for them, for our amazing name the Teddy Stall.

So if you have teddies in need of a new home, please bring them into school, whenever suits you and we will find them a new loving home.

All the funds raised by our Spring Fair help to provide all those important extras for our Great Wood children.

## Parents Evening

On Wednesday 15th February we will be holding our Spring Term Parents Evening, where staff will be available in their classrooms from 3.45pm – 6.30pm. Bookings are available via Arbor, our online Parent Portal. Here you will be able to choose the most convenient available slot. Each appointment will be 5 minutes. Please consider our teachers schedules and be aware they might ask you to arrange an extra meeting (at a later date), if you feel you need more time for discussions.





Place your bets...  
Great Wood School  
Presents  
**Race Night**



Come and join us for a night of virtual horse racing on  
**Friday 10th February**

**Great Wood School 7pm—10pm**

**(bring your own drink and nibbles)**

**Adults (over 18) only**

**£3 Entry per person**

**Individual bets made at £1 per horse, per race**

**Please inform the school office if you will be attending and let us know if you would be interested in a crèche facility, priced at £1 per child (which includes a film & popcorn).**

**Lost items**

Please check your child hasn't accidentally picked up another child's school uniform. If this is the case, 'pop' it back into school and we will endeavour to return it to their rightful owner.

Please, please, please ensure that ALL of your child's belongings are labelled. We can always find the real owner of a labelled jumper or cardigan; anonymous items can be somewhat more difficult!



**Snow Days**

The weather is unpredictable at the moment and more snow is quite likely. In the unlikely event of a snow day, school will inform parents/carers that the school will be shut, as early as possible via email. We always endeavour to keep the school open and if you don't hear from us, Great Wood will be open.

Please DO NOT call school on these days to see if we are open, as this blocks the phone line for those parents trying to inform us of absences due to illness.

During snowy/icy weather, Mrs Wilkinson will be working very hard to ensure our safety, by gritting the paths into school on icy mornings. Please can all parents, children (and staff) make sure they walk only on the pathways that she has gritted.

Thank you for your cooperation with this matter, we really appreciate it.



### Car Parking

Unfortunately we, once again, have to draw your attention to parking at and around school.

Could we once again **PLEASE** ask parents, grandparents, carers and friends to be mindful about where they park.

- It is an offence to park on the zig-zag lines outside the school **AT ANY TIME**
- It is an offence to park within 10 metres of a junction **AT ANY TIME**
- It is an offence to park in front of a dropped kerb (thereby preventing residents from using their driveway)
- It is an offence to double park, thereby blocking the roadway to other traffic
- Police advise **NOT** to park on the pavement (and this is clearly dangerous when children are using the pavement)

Great Wood's staff car park is for Staff **ONLY. PLEASE DO NOT USE THE STAFF CAR PARK.** This also applies at the end of afterschool clubs. ALSO please can we remind all pedestrians to use the **FOOTPATH ONLY** and not cut across the car park.

#### **Please have a think about:-**

- Walking to/from school - whilst this is not practical for some, most of our pupils live within half a mile of the school and this would be a healthy way to start/end the school day.
- Car-Sharing - could parents, who live near to one another, agree to car-share (and, at the same time, save on petrol)?
- A walking bus - where a group of children, living near to one another, are walked to school by a couple of adults. Adults could take it in turn to be the walkers.
- Using the large, free and safe car park on Old Road - only a 5 minute walk away.
- Using the car park on Great Wood Hall and crossing with our school crossing patrol.

**We would be extremely grateful if you could adhere to these points.**

**Please help us keep our children safe.**



### Violin Assembly



On Friday 17th February our fabulous Mrs Whiteley will be leading our year 3/4 children in their K2M assembly. Parents, Carers and Grandparents are welcome to join us and listen to their amazing violin playing (we are sure you have already sampled this at home)! The assembly will start at 2.30pm. Hope to see you there!

### Reception, Year 1 & 2 Show and Tell

Please can we remind you that any toys bought into school for 'Show and Tell' on Fridays should be small enough to fit into the children's trays, due to space restrictions, damage & loss.



**Bugs!** - We have a couple of bugs going around school at the moment, to help stop these spreading please can you refrain from sending your child back to school until 48hours after any episode of sickness.



### World Book Day



Advanced notice - On Thursday 2nd March all our children will be dressing as their favourite character, from their favourite book. Happy costume hunting!





# FEBRUARY HOLIDAY CLUBS

**Come and join us for some sports, games and activities from February 20 - 24.**

Our action-packed program gives children the chance to remain active, develop skills and make new friends within a safe and secure environment.

## **We are inclusive!**

We value the importance of accommodating children, aged 4-12 years old, who come to us from different backgrounds. Everyone is challenged and provided with an enjoyable experience.

**Search for your venue: [asmsports.co.uk](http://asmsports.co.uk)**



**READ OUR REVIEWS**



**Each day will be themed alongside our regular sports & activities.**

**Monday Football Masterclass**

**Tuesday Scoot Skills**

**Wednesday Football Masterclass**

**Thursday Olympic Festival**

**Friday Mini-Medics**

**Visit:** [www.asmsports.co.uk](http://www.asmsports.co.uk)

**Call:** 01782 366332

**Email:** [info@asmsports.co.uk](mailto:info@asmsports.co.uk)

